

# Mazda2

## Wiring Diagram Supplement

### CONTENTS

TITLE	Section
GENERAL INFORMATION OF WIRING DIAGRAMS	GI
SYSTEM CIRCUIT DIAGRAM/ CONNECTOR LOCATIONS	C-S
COMMON CONNECTORS	X
ALPHABETICAL INDEX	AI

### FOREWORD

This is a supplement to the following Wiring Diagram and covers only new major components not in the previous Wiring Diagrams.

Mazda2 Wiring Diagram  
5571-1E-02L European (L.H.D.) Specs.

As all information in this supplement was the best available at the time of printing, all alterations related to modifications will be notified by Service Information.

**Mazda Motor Corporation**  
**HIROSHIMA, JAPAN**

### APPLICATION:

This manual applies to vehicles beginning with the Vehicle Identification Numbers (VIN) on the following page.

©2005 Mazda Motor Corporation  
PRINTED IN \_\_\_\_\_, AUG. 2005  
5657-1E-05H

## **WARNING**

Servicing a vehicle can be dangerous. If you have not received service-related training, the risks of injury, property damage, and failure of servicing increase. The recommended servicing procedures for the vehicle in this workshop manual were developed with Mazda-trained technicians in mind. This manual may be useful to non-Mazda trained technicians, but a technician with our service-related training and experience will be at less risk when performing service operations. However, all users of this manual are expected at least to know general safety procedures.

This manual contains "Warnings" and "Cautions" applicable to risks not normally encountered in a general technician's experience. They should be followed to reduce the risk of injury and the risk that improper service or repair may damage the vehicle or render it unsafe. It is also important to understand that the "Warnings" and "Cautions" are not exhaustive. It is impossible to warn of all the hazardous consequences that might result from failure to follow the procedures.

The procedures recommended and described in this manual are effective methods of performing service and repair. Some require tools specifically designed for a specific purpose. Persons using procedures and tools which are not recommended by Mazda Motor Corporation must satisfy themselves thoroughly that neither personal safety nor safety of the vehicle will be jeopardized.

The contents of this manual, including drawings and specifications, are the latest available at the time of printing, and Mazda Motor Corporation reserves the right to change the vehicle designs and alter the contents of this manual without notice and without incurring obligation.

Parts should be replaced with genuine Mazda replacement parts or with parts which match the quality of genuine Mazda replacement parts. Persons using replacement parts of lesser quality than that of genuine Mazda replacement parts must satisfy themselves thoroughly that neither personal safety nor safety of the vehicle will be jeopardized.

Mazda Motor Corporation is not responsible for any problems which may arise from the use of this manual. The cause of such problems includes but is not limited to insufficient service-related training, use of improper tools, use of replacement parts of lesser quality than that of genuine Mazda replacement parts, or not being aware of any revision of this manual.

**VEHICLE IDENTIFICATION NUMBERS (VIN)  
(CHASSIS NUMBERS)**

JMZ NB2WPJ\*5C  
JMZ NC2WPJ\*5C  
JMZ NCAWPJ\*5C  
JMZ ND2WPJ\*5C  
JMZ NE2WPJ\*5C

**WIRING COLOR CODE**

<b>COLOR</b>	<b>CODE</b>	<b>COLOR</b>	<b>CODE</b>
BLACK	B	ORANGE	O
BLUE	L	PINK	P
BROWN	BR	RED	R
DARK BLUE	DL	SKY BLUE	SB
DARK GREEN	DG	TAN	T
GRAY	GY	VIOLET	V
GREEN	G	WHITE	W
LIGHT BLUE	LB	YELLOW	Y
LIGHT GREEN	LG		

# SYSTEM INDEX

<b>GENERAL INFORMATION .....</b>	<b>2</b>
<b>INSTRUMENT CLUSTER-RELATED SYSTEM</b>	
<b>INSTRUMENT CLUSTER .....</b>	<b>4</b>
<b>BODY-RELATED SYSTEM</b>	
<b>CENTRAL LOCKING SYSTEM</b>	
<b>WITHOUT DOUBLE LOCKING .....</b>	<b>18</b>
<b>SUPPLEMENTAL RESTRAINT SYSTEM.....</b>	<b>22</b>
<b>EXTERIOR LIGHTING SYSTEM</b>	
<b>HEADLAMP .....</b>	<b>14</b>
<b>COMMON CONNECTOR LIST .....</b>	<b>28</b>
<b>ALPHABETICAL INDEX.....</b>	<b>30</b>

## VEHICLE IDENTIFICATION NUMBER (VIN) CODE

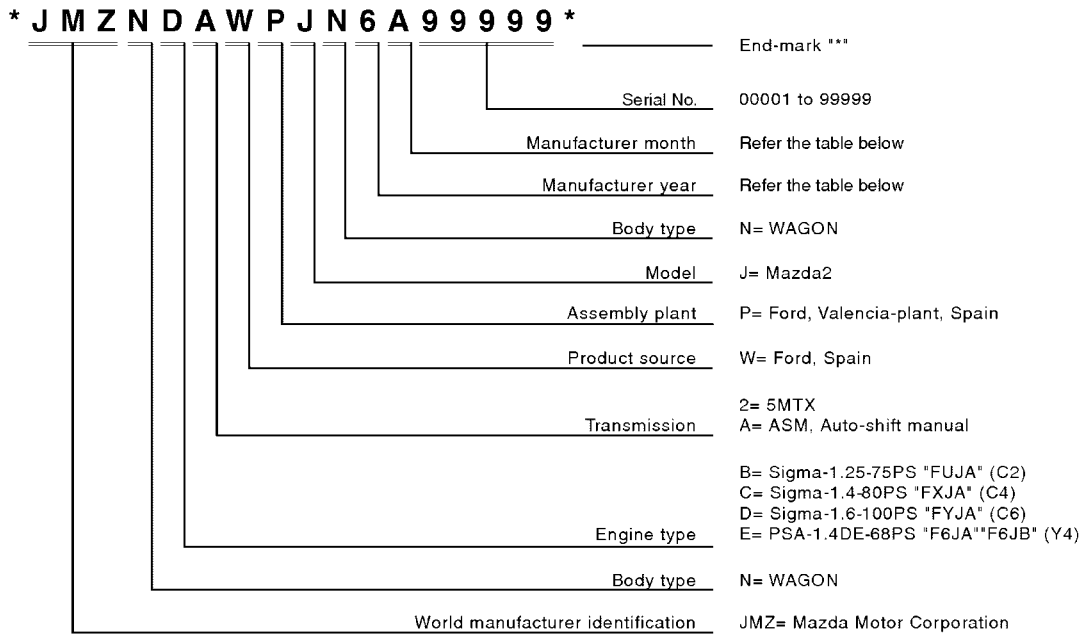


TABLE OF YEAR CODES

Year of manufacturer	2005	2006	2007
Year codes	5	6	7

TABLE OF MANUFACTURER MONTH CODES

Jan	J	L	C
Feb	U	Y	K
Mar	M	S	D
Apr	P	T	E
May	B	J	L
Jun	R	U	Y
Jul	A	M	S
Aug	G	P	T
Sep	C	B	J
Oct	K	R	U
Nov	D	A	M
Dec	E	G	P

# Reading Wiring Diagrams

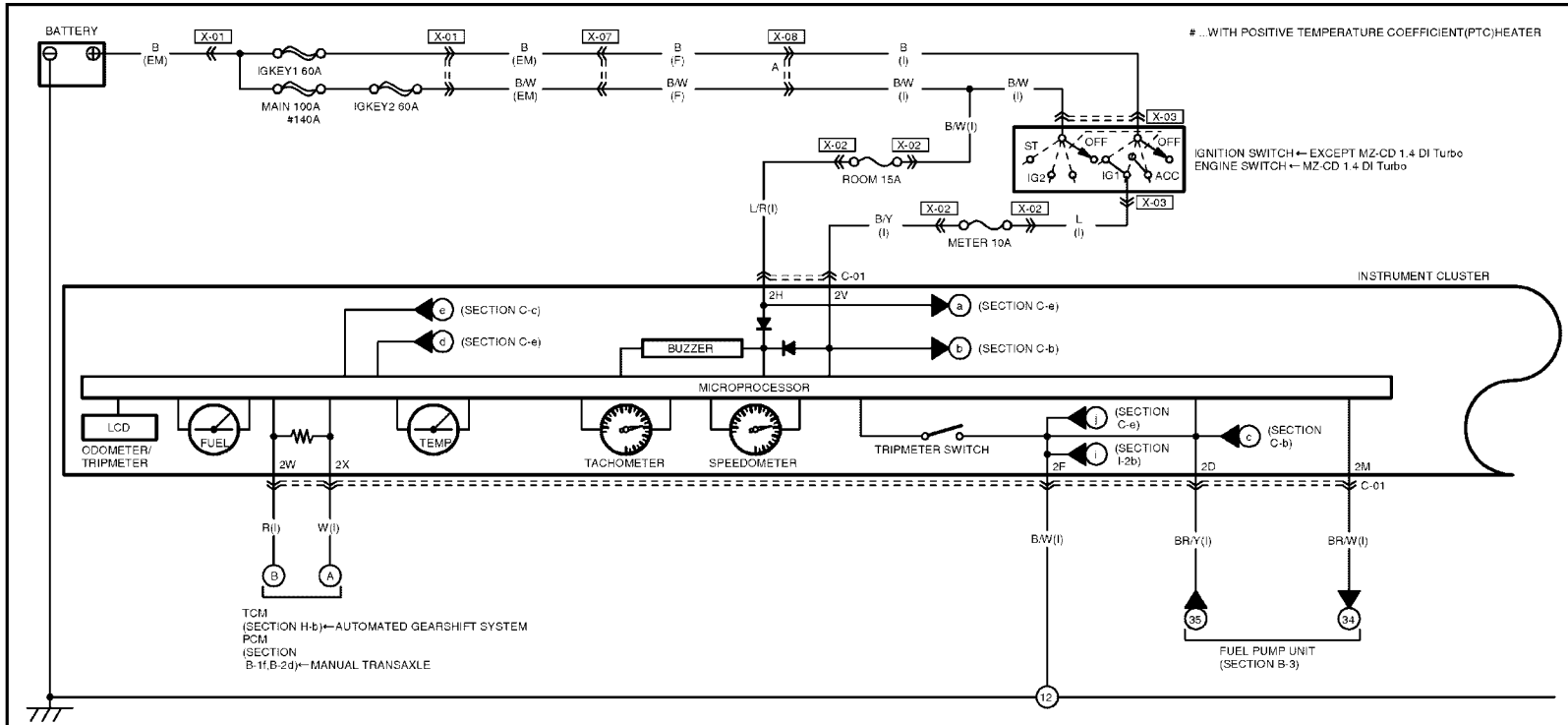
**GI**

VEHICLE IDENTIFICATION NUMBERS (VIN)

JMZ NB2WPJ\*5C  
JMZ NC2WPJ\*5C  
JMZ NCAWPJ\*5C  
JMZ ND2WPJ\*5C  
JMZ NE2WPJ\*5C

# INSTRUMENT CLUSTER

C-a

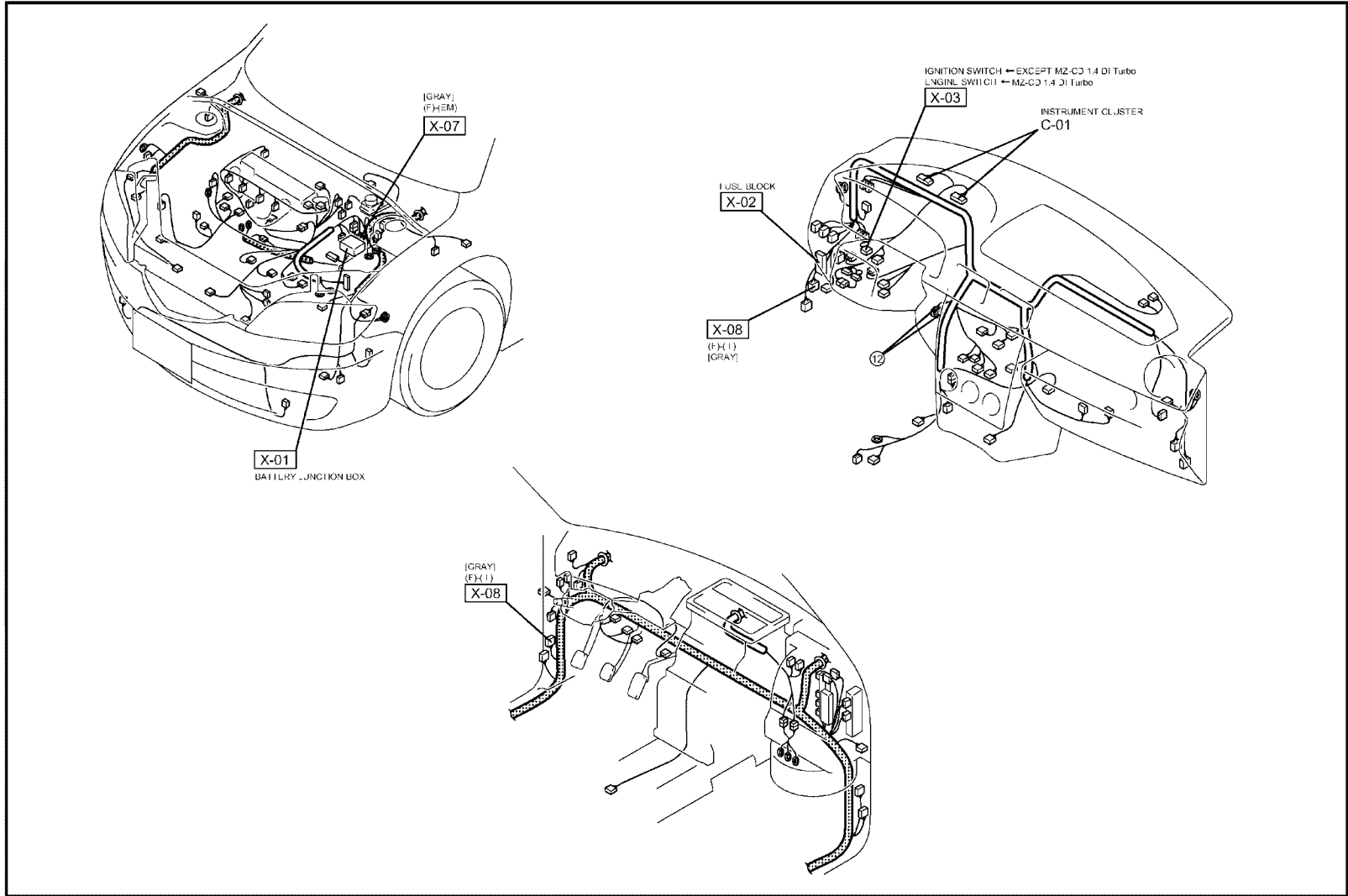


4

C-01 INSTRUMENT CLUSTER(I)

			2Q	2O	2M	2K	2I	2G						
2W	2U	2S							2E	2C	2A			
R	*	*	*	*	BR/W	LG/B	W/R	LB	B	*	*			
W	B/Y	*	G/B	G	G/W	L/Y	*	L/R	B/W	BR/Y	*			
2X	2V	2T	2R	2P	2N	2L	2J	2H	2F	2D	2B			

HARNESS SYMBOL:  (F)  (E)  (R)

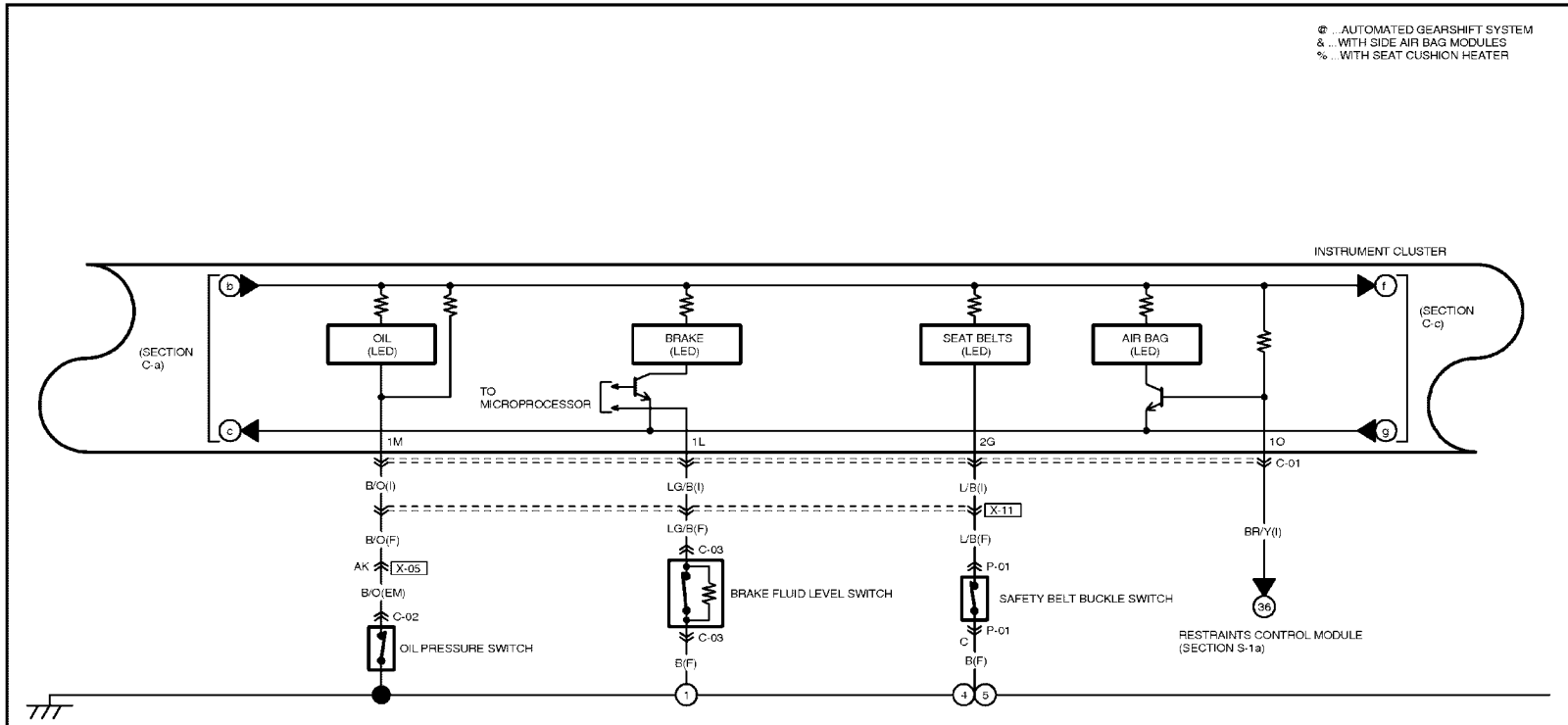


C-a

INSTRUMENT CLUSTER

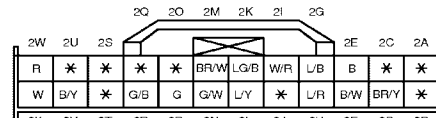
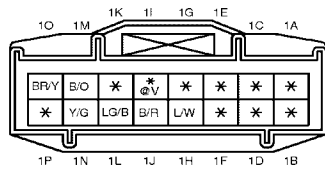
C-b

⊕ AUTOMATED GEARSHIFT SYSTEM  
 & WITH SIDE AIR BAG MODULES  
 % WITH SEAT CUSHION HEATER



9

C-01 INSTRUMENT CLUSTER(I)

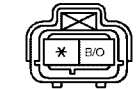


C-02 OIL PRESSURE SWITCH(EM)

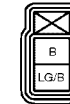
EXCEPT MZ-CD 1.4 DI Turbo



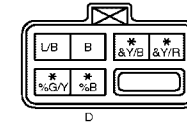
MZ-CD 1.4 DI Turbo



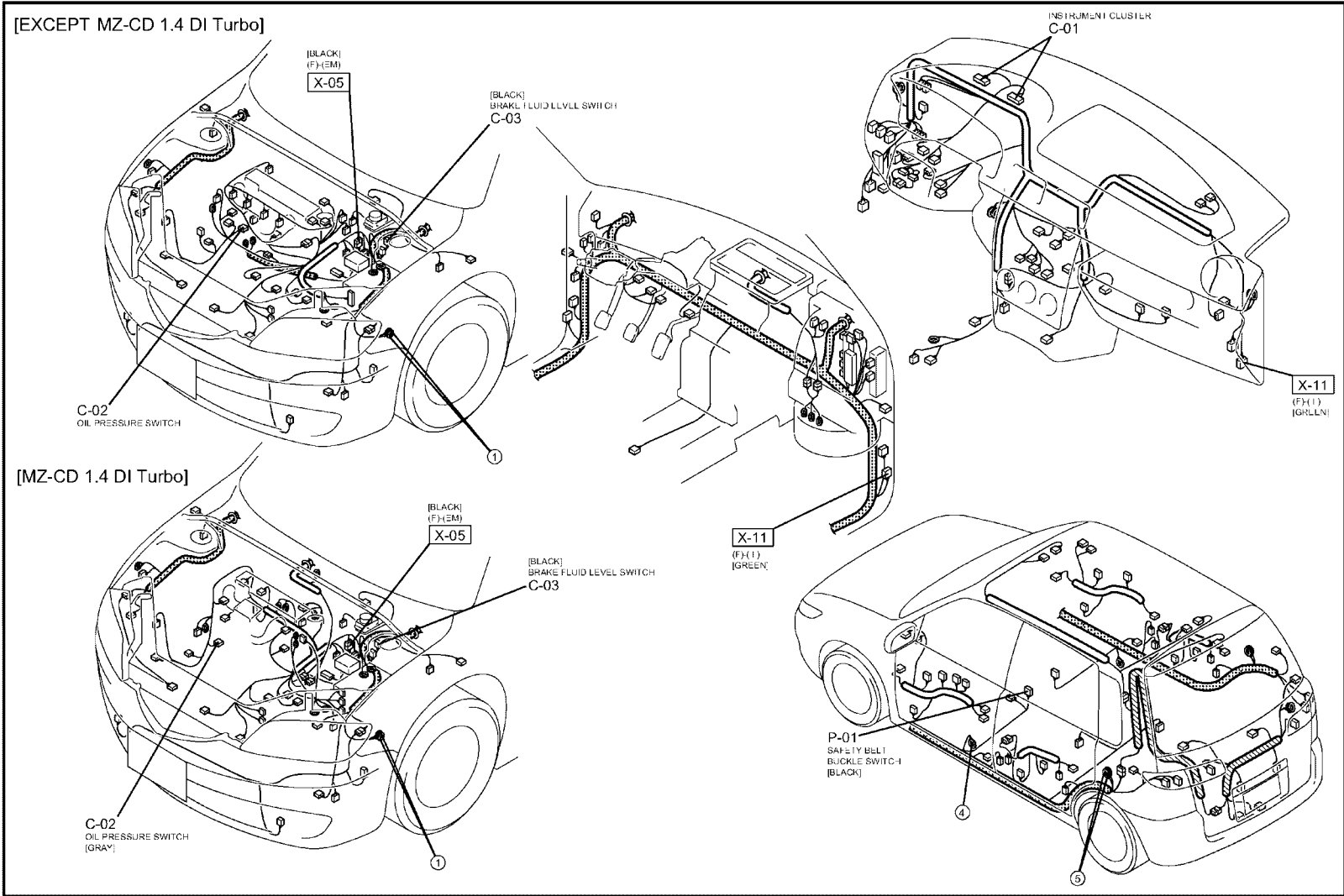
C-03 BRAKE FLUID LEVEL SWITCH(F)



P-01 SAFETY BELT BUCKLE SWITCH(F)



HARNESS SYMBOL:  (F)  (E)  (R)

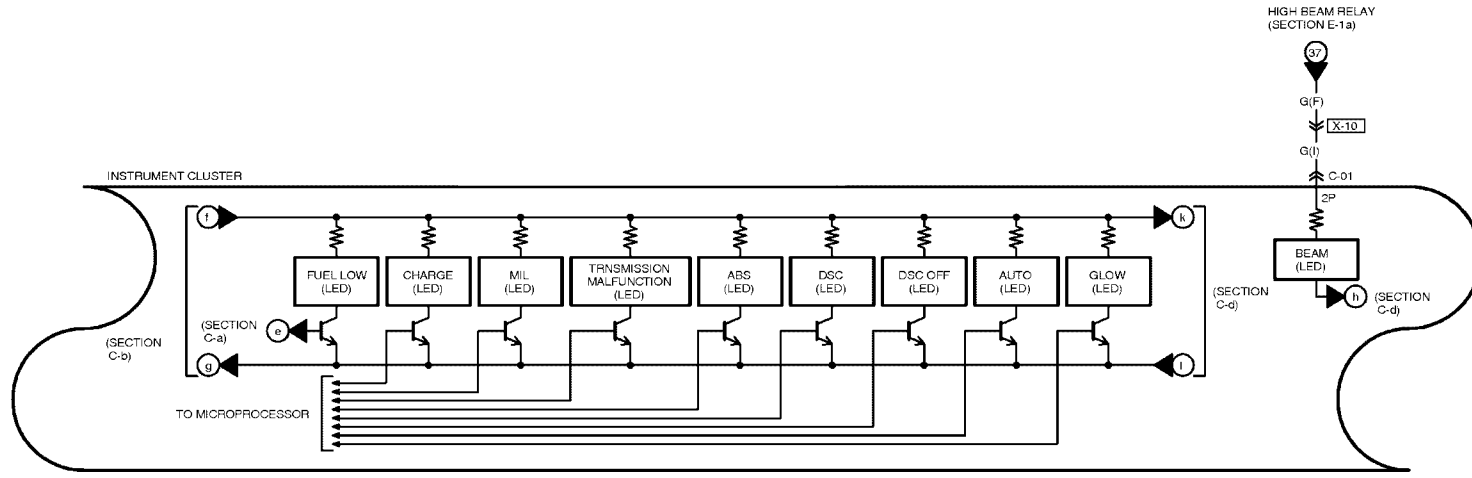


7

C-b

# INSTRUMENT CLUSTER

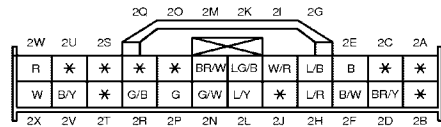
C-c



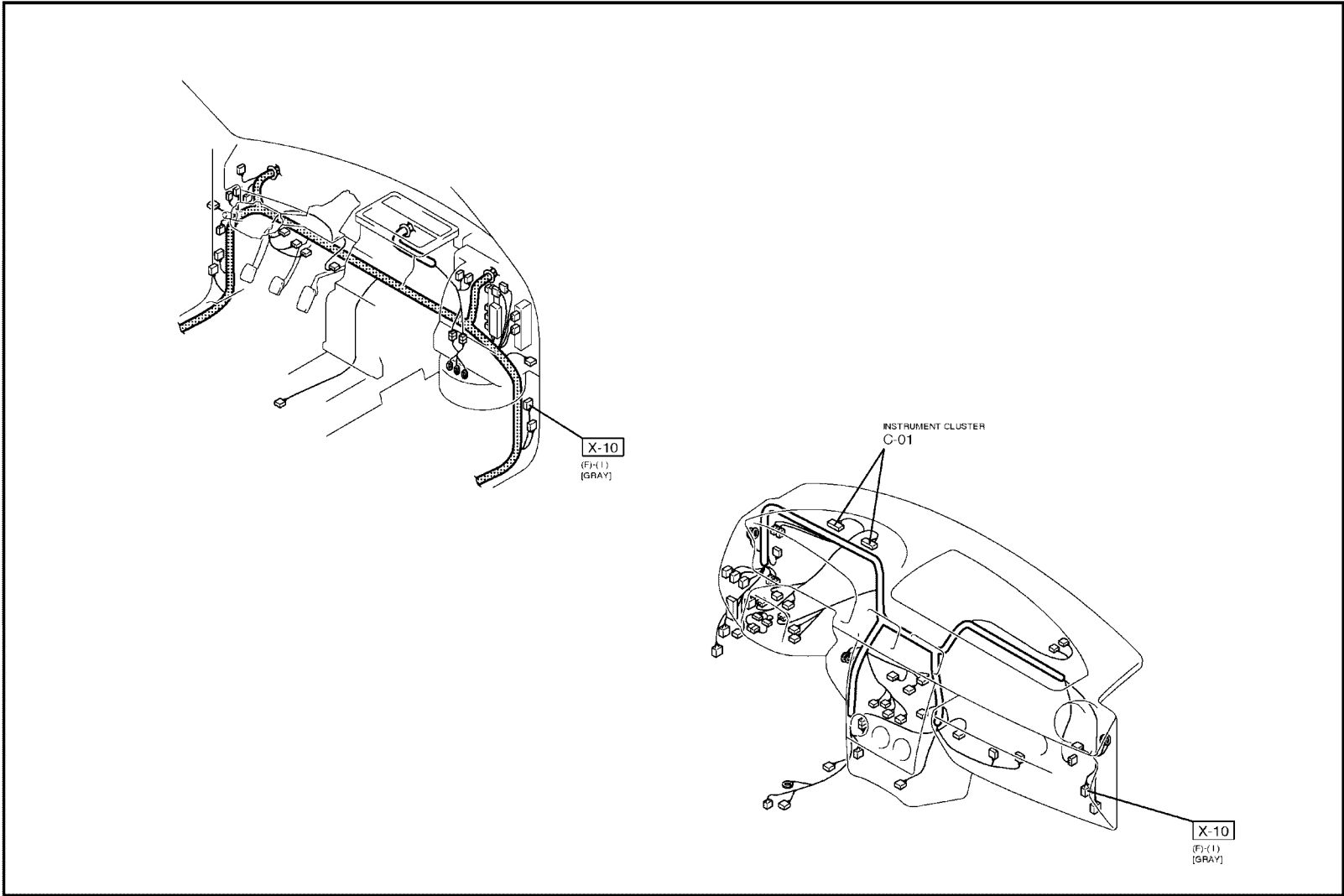
8

///

C-01 INSTRUMENT CLUSTER(I)



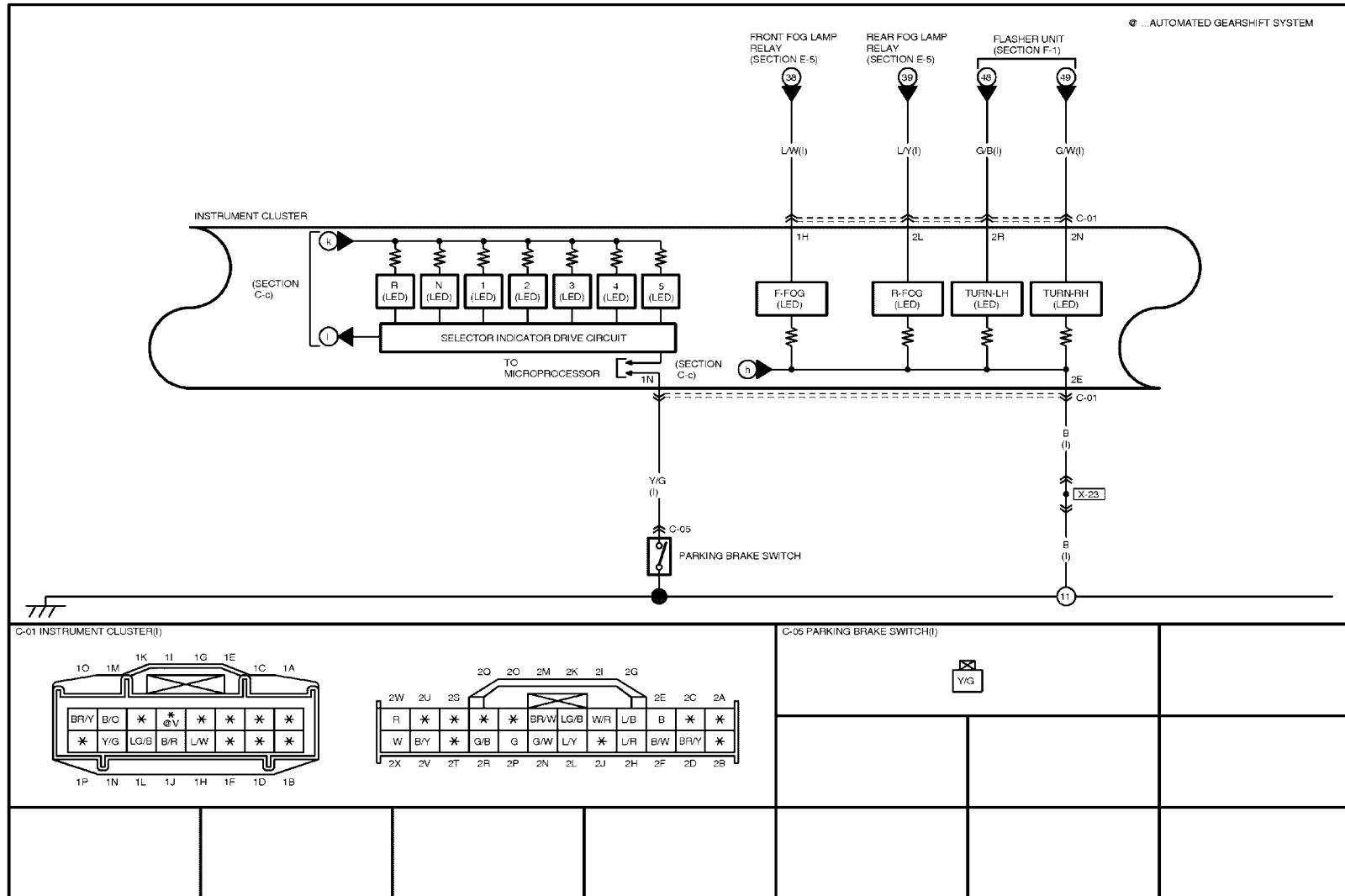
HARNESS SYMBOL:  (F)  (E)  (R)



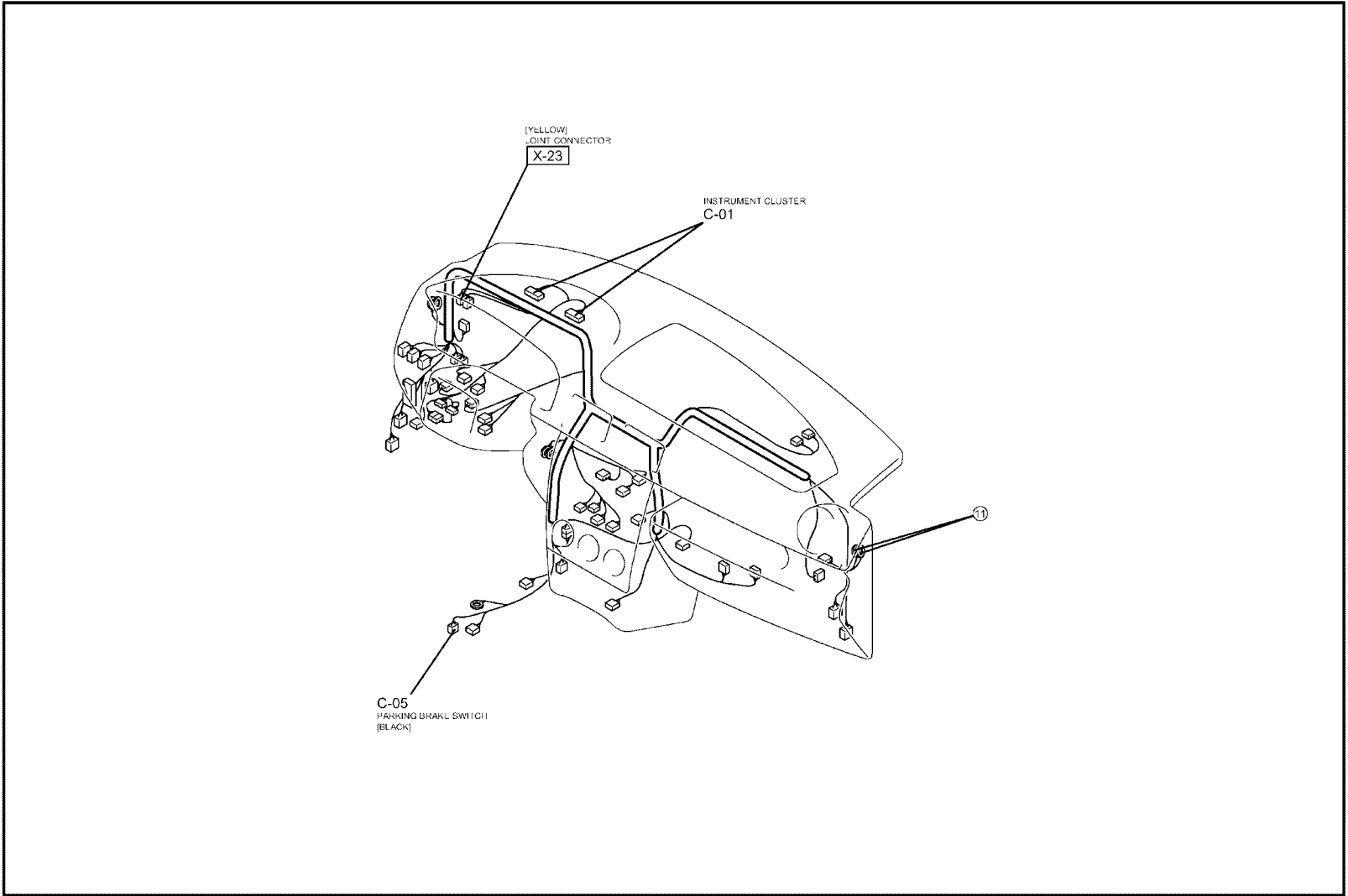
# INSTRUMENT CLUSTER

C-d

10



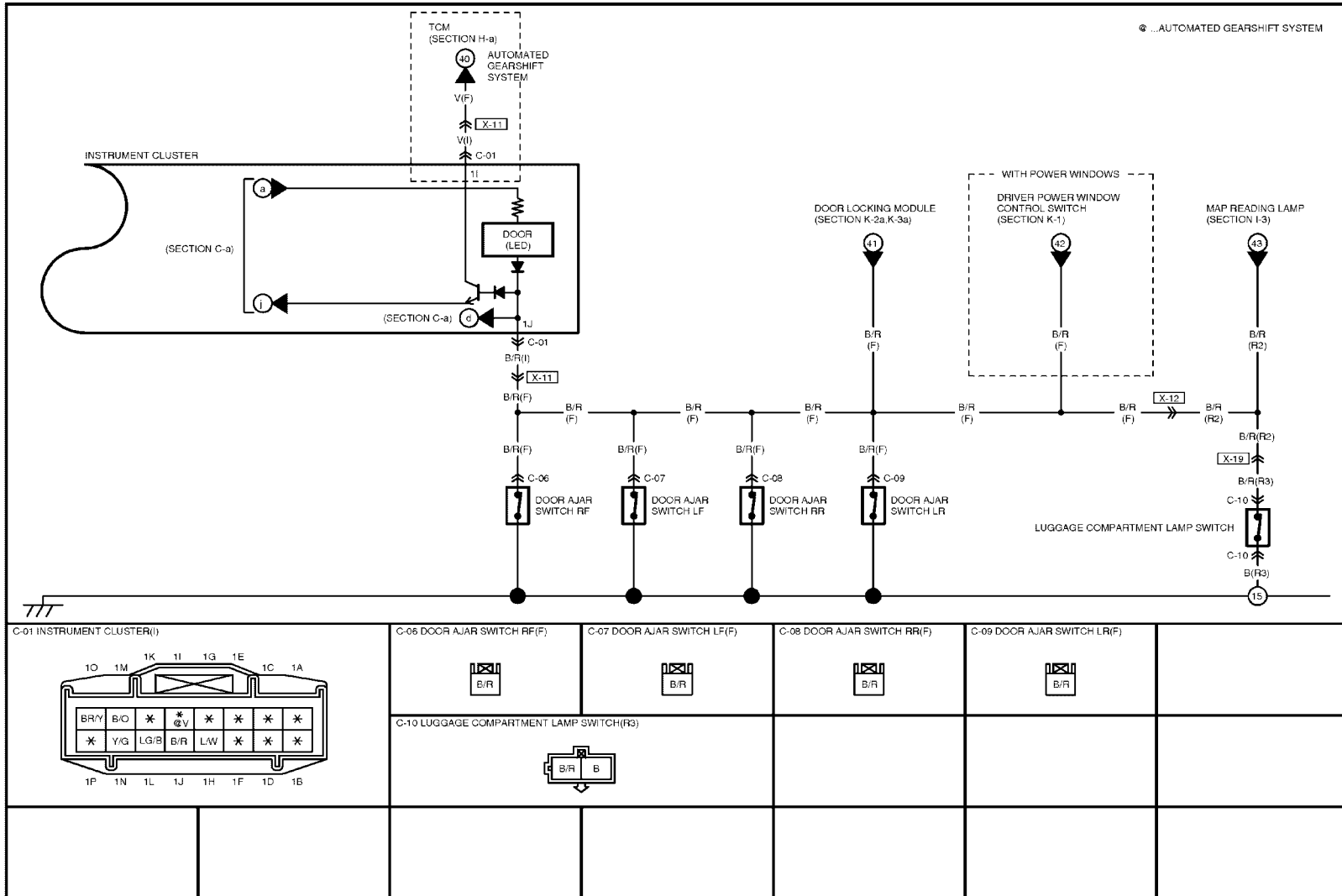
HARNESS SYMBOL:  (F)  (E)  (R)



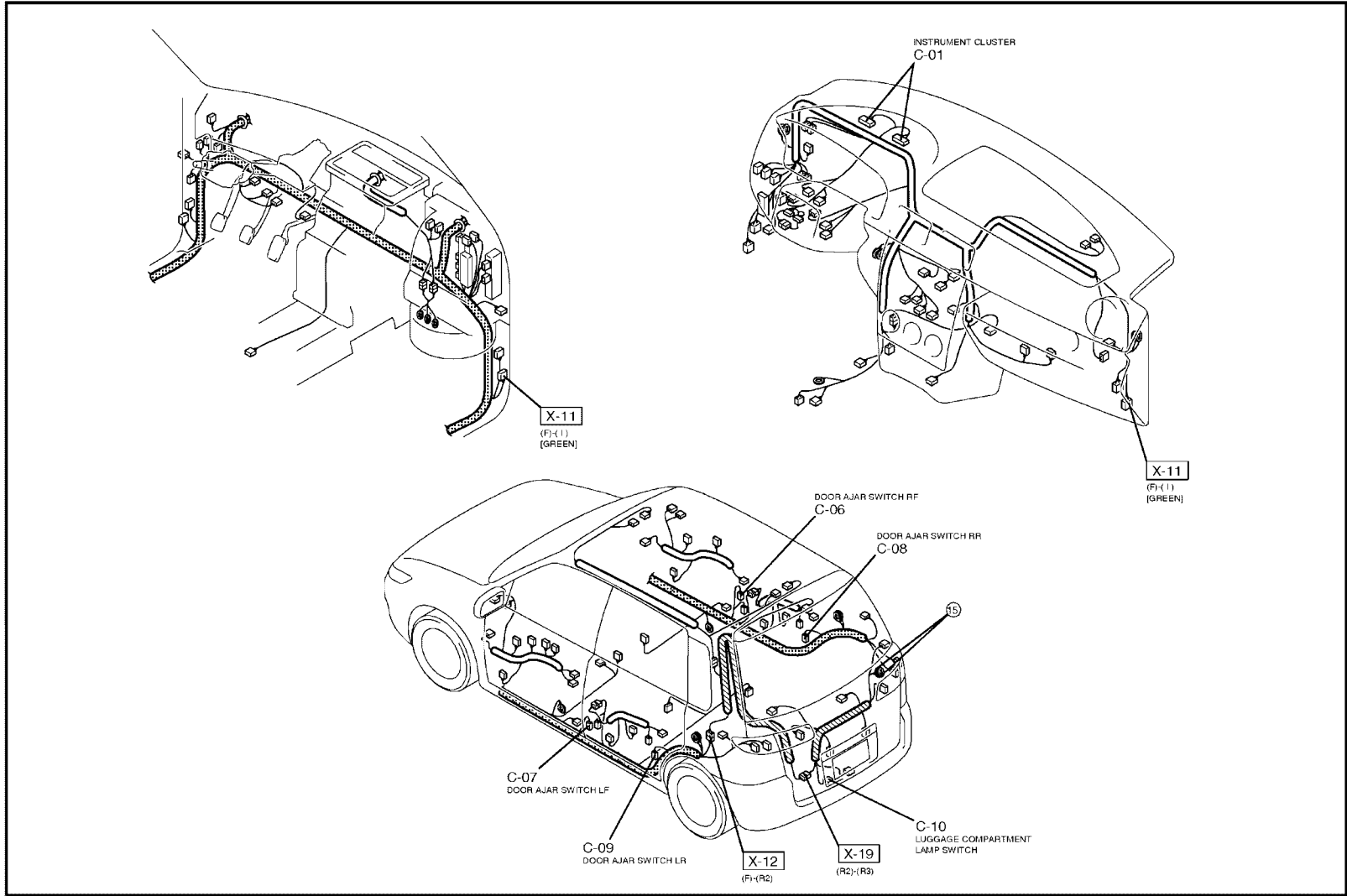
# INSTRUMENT CLUSTER

C-e

12



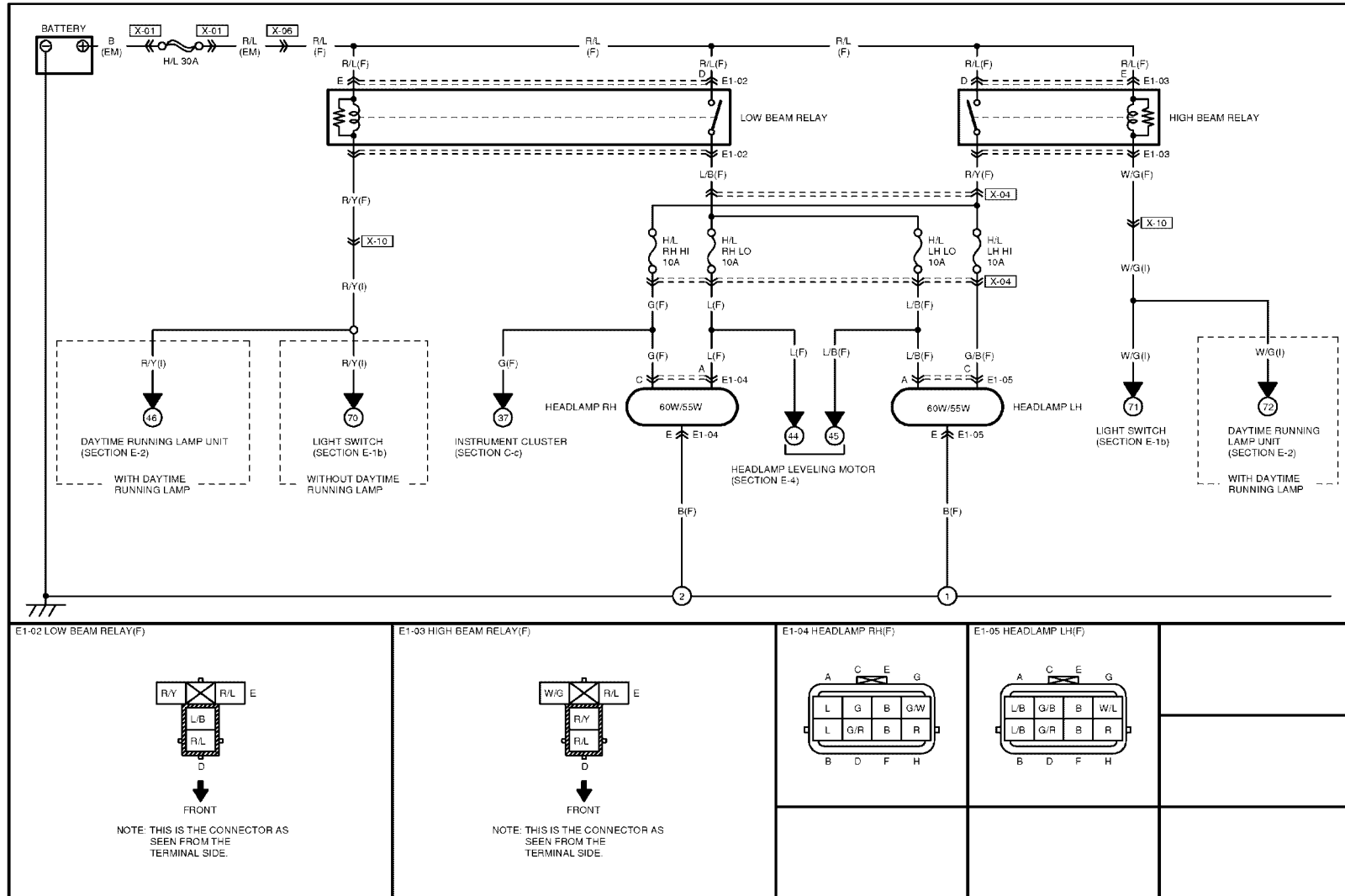
HARNESS SYMBOL:  (F)  (E)  (R)



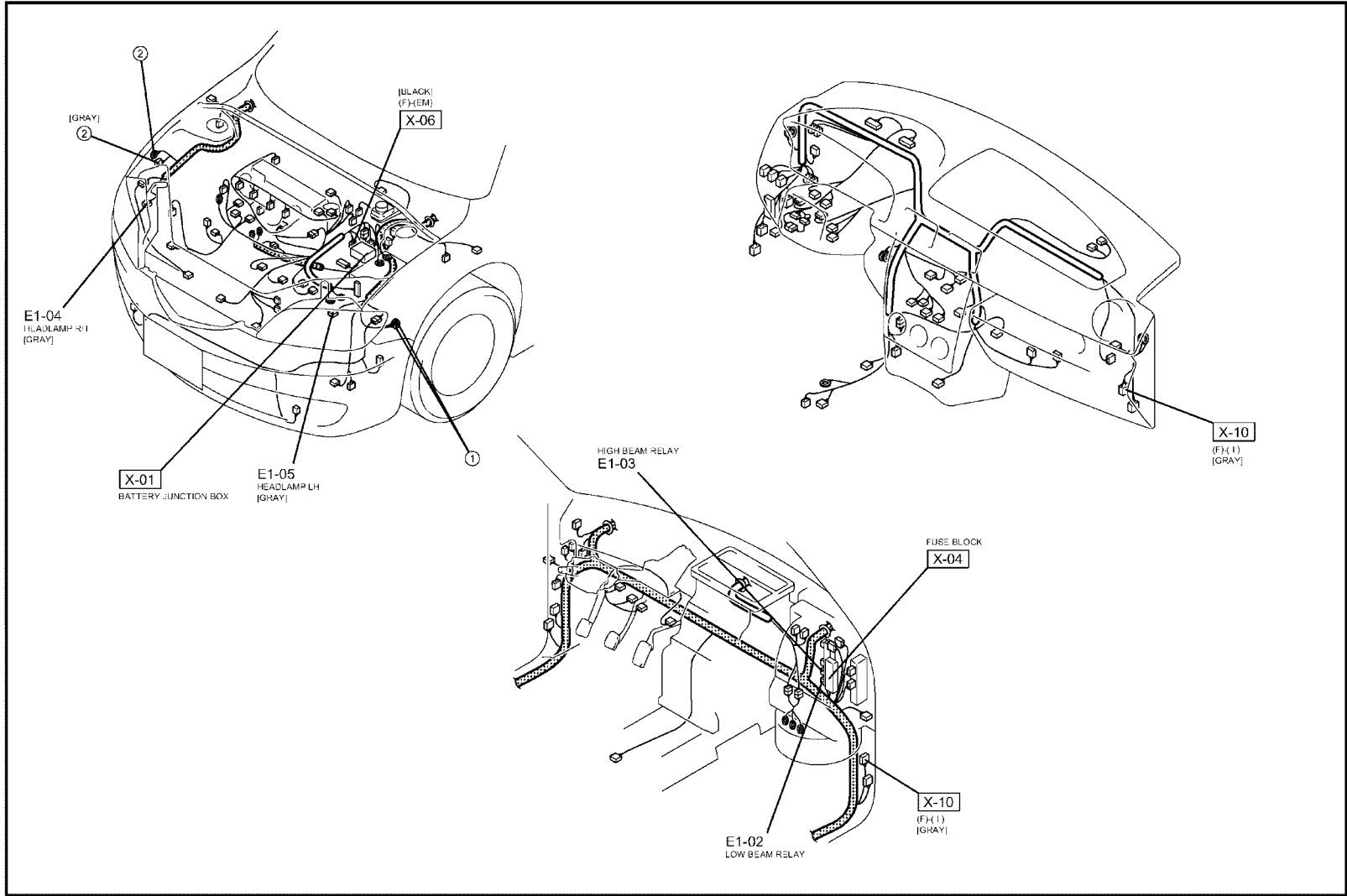
# HEADLAMP

# E-1a

14



HARNESS SYMBOL: [Grid] (F) [Dots] (E) [Diagonal] (R)

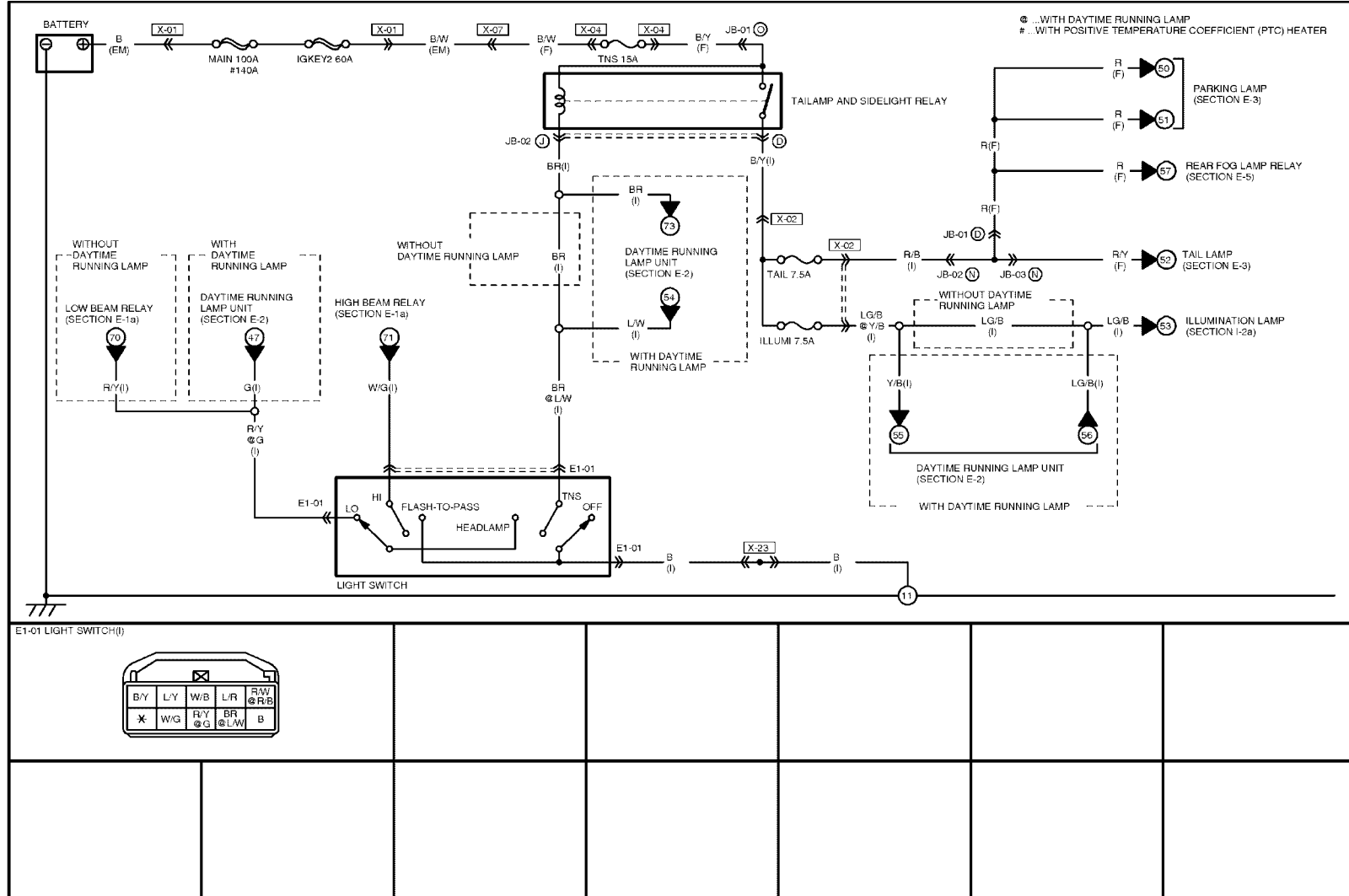


E-1a

# HEADLAMP

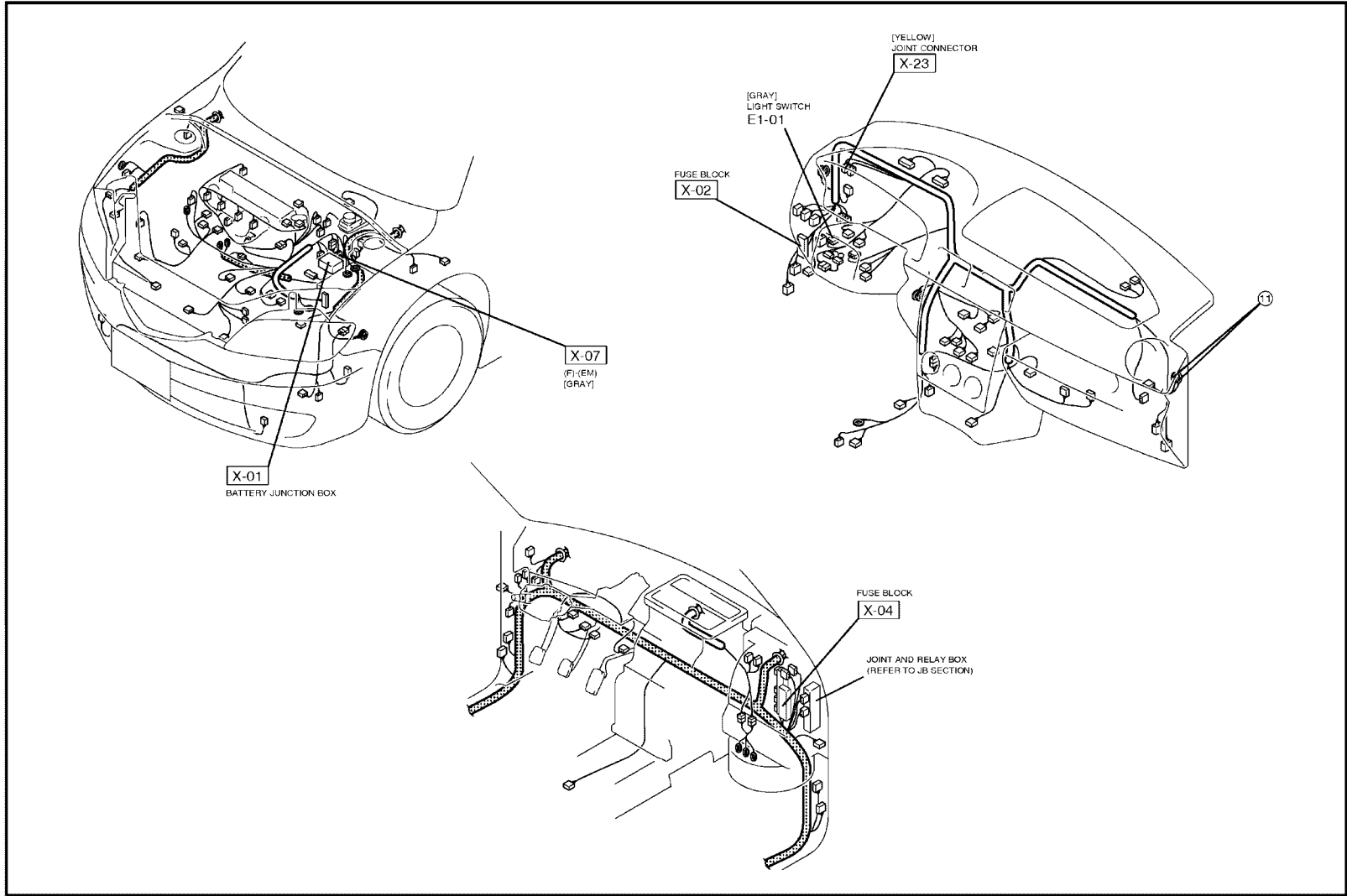
# E-1b

16



HARNESS SYMBOL: [Grid] (F) [Dotted] (E) [Diagonal] (R)

17

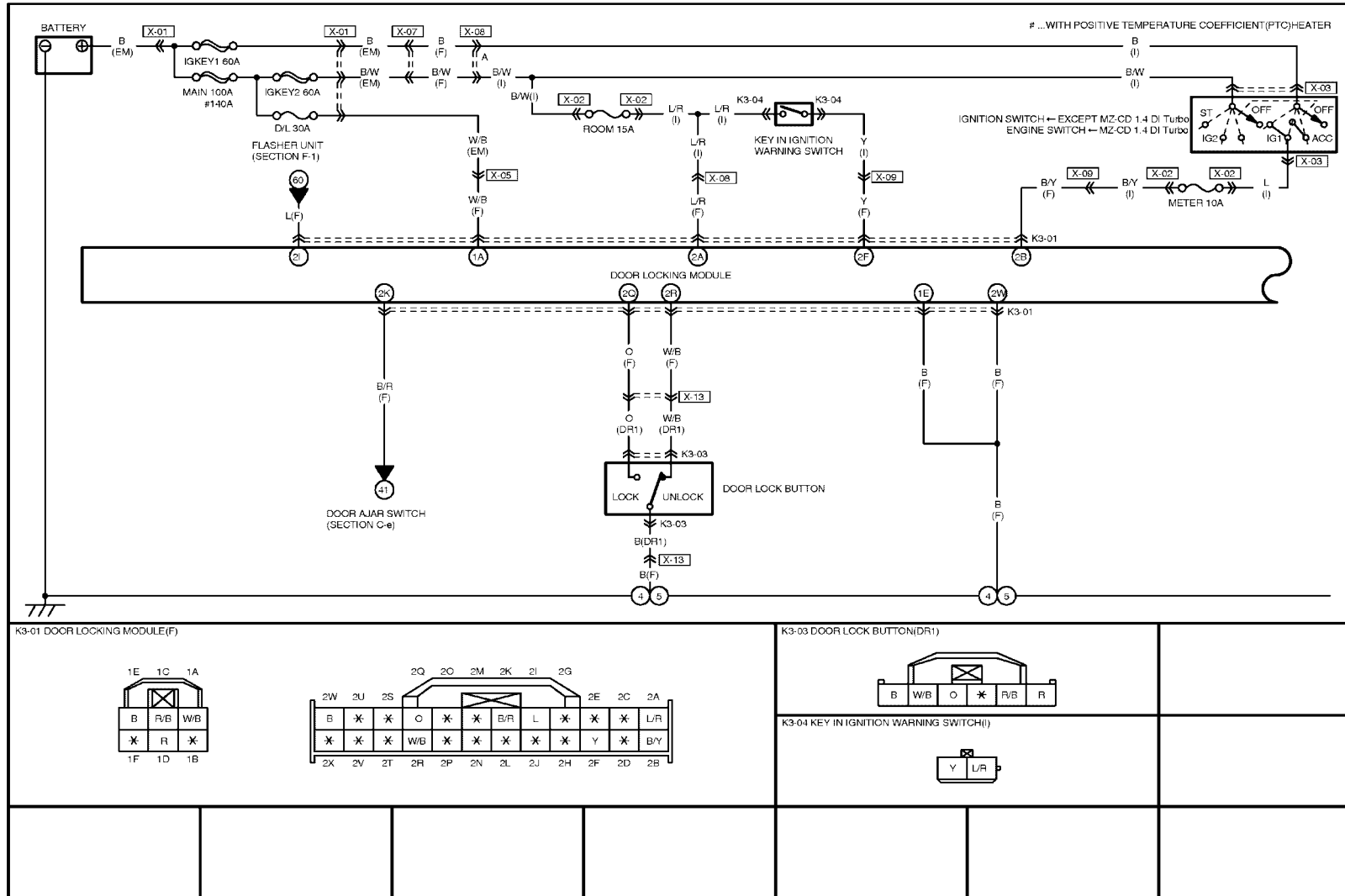


E-1b

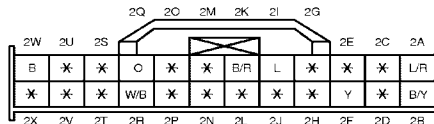
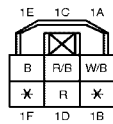
# CENTRAL LOCKING SYSTEM (WITHOUT DOUBLE LOCKING)

K-3a

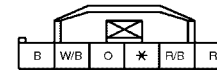
18



K3-01 DOOR LOCKING MODULE(F)



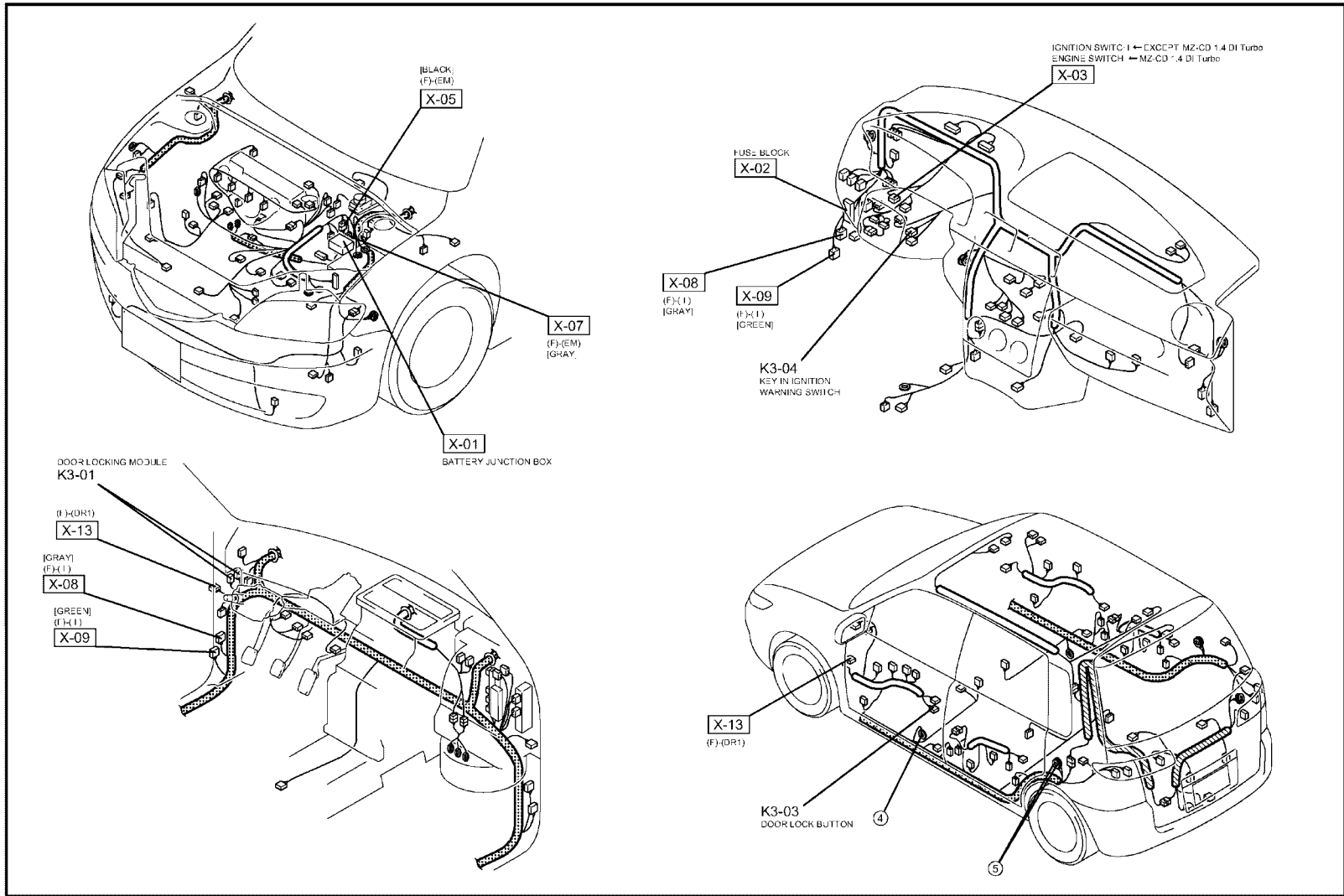
K3-03 DOOR LOCK BUTTON(DR1)



K3-04 KEY IN IGNITION WARNING SWITCH(I)



HARNESS SYMBOL:  (F)  (E)  (R)

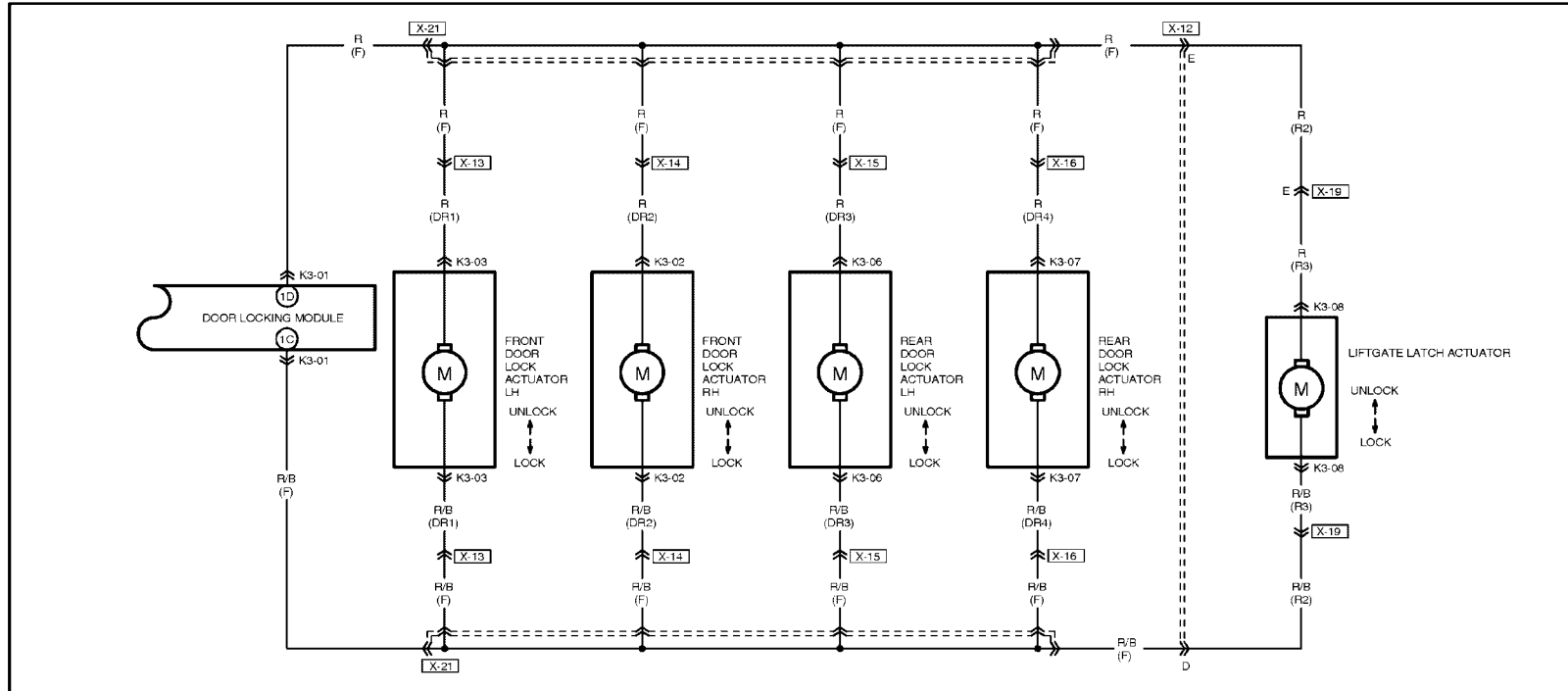


K-3a

### CENTRAL LOCKING SYSTEM (WITHOUT DOUBLE LOCKING)

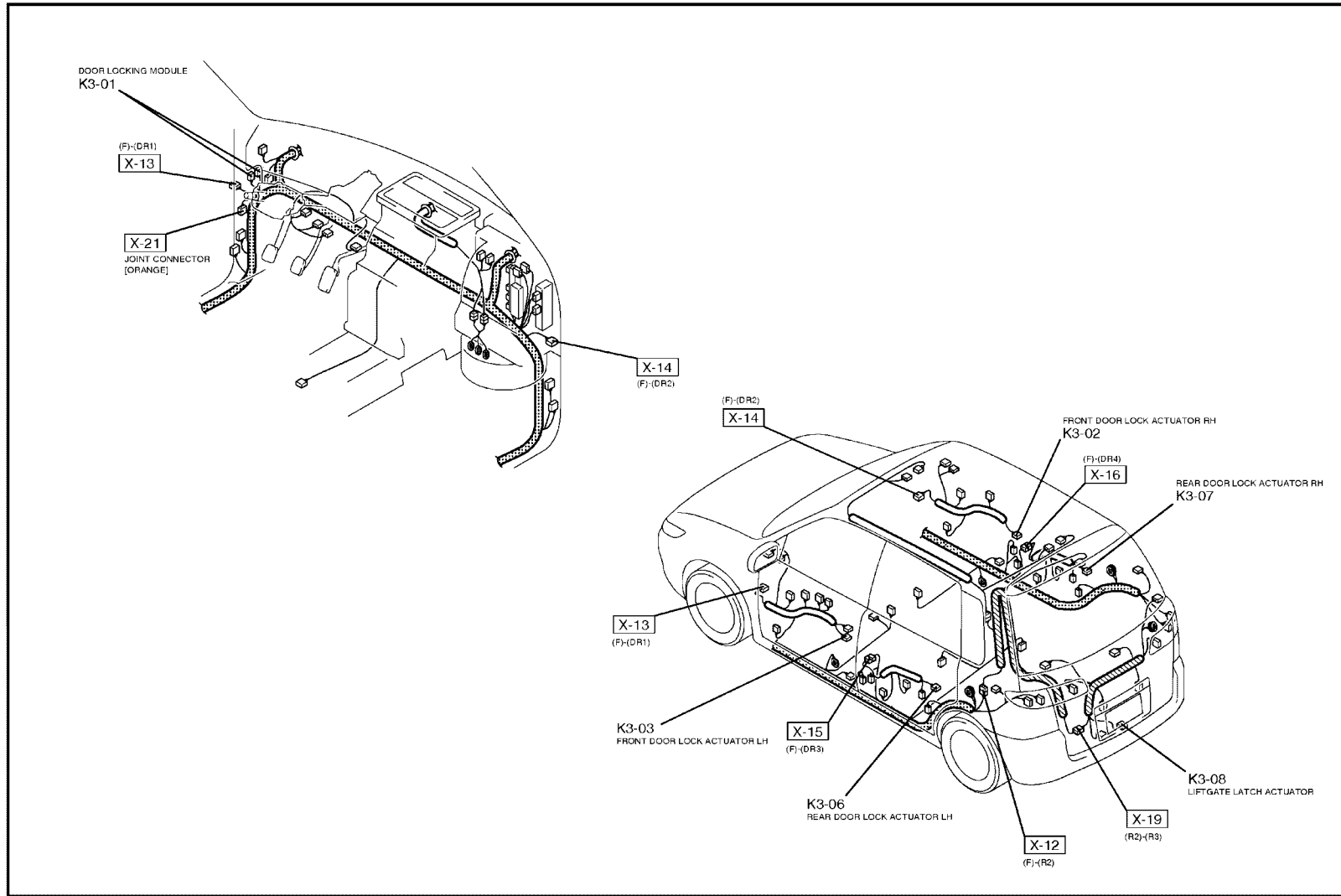
K-3b

20



<p>K3-01 DOOR LOCKING MODULE(F)</p>	<p>K3-02 FRONT DOOR LOCK ACTUATOR RH(DR2)</p> <p>K3-07 REAR DOOR LOCK ACTUATOR RH(DR4)</p>	<p>K3-03 FRONT DOOR LOCK ACTUATOR LH(DR1)</p> <p>K3-08 LIFTGATE LATCH ACTUATOR(R3)</p>	<p>K3-06 REAR DOOR LOCK ACTUATOR LH(DR3)</p>

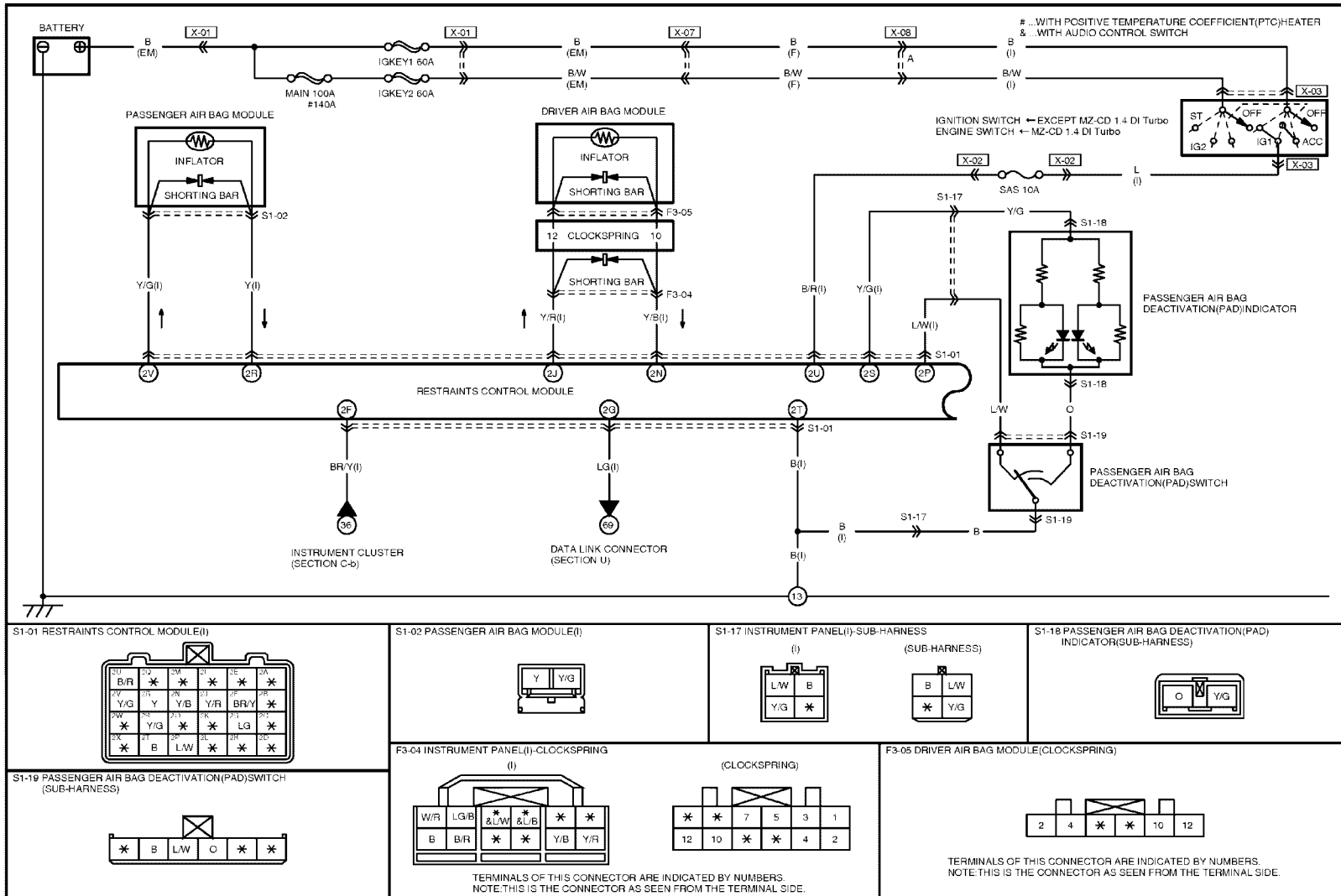
HARNESS SYMBOL:  (F)  (E)  (R)



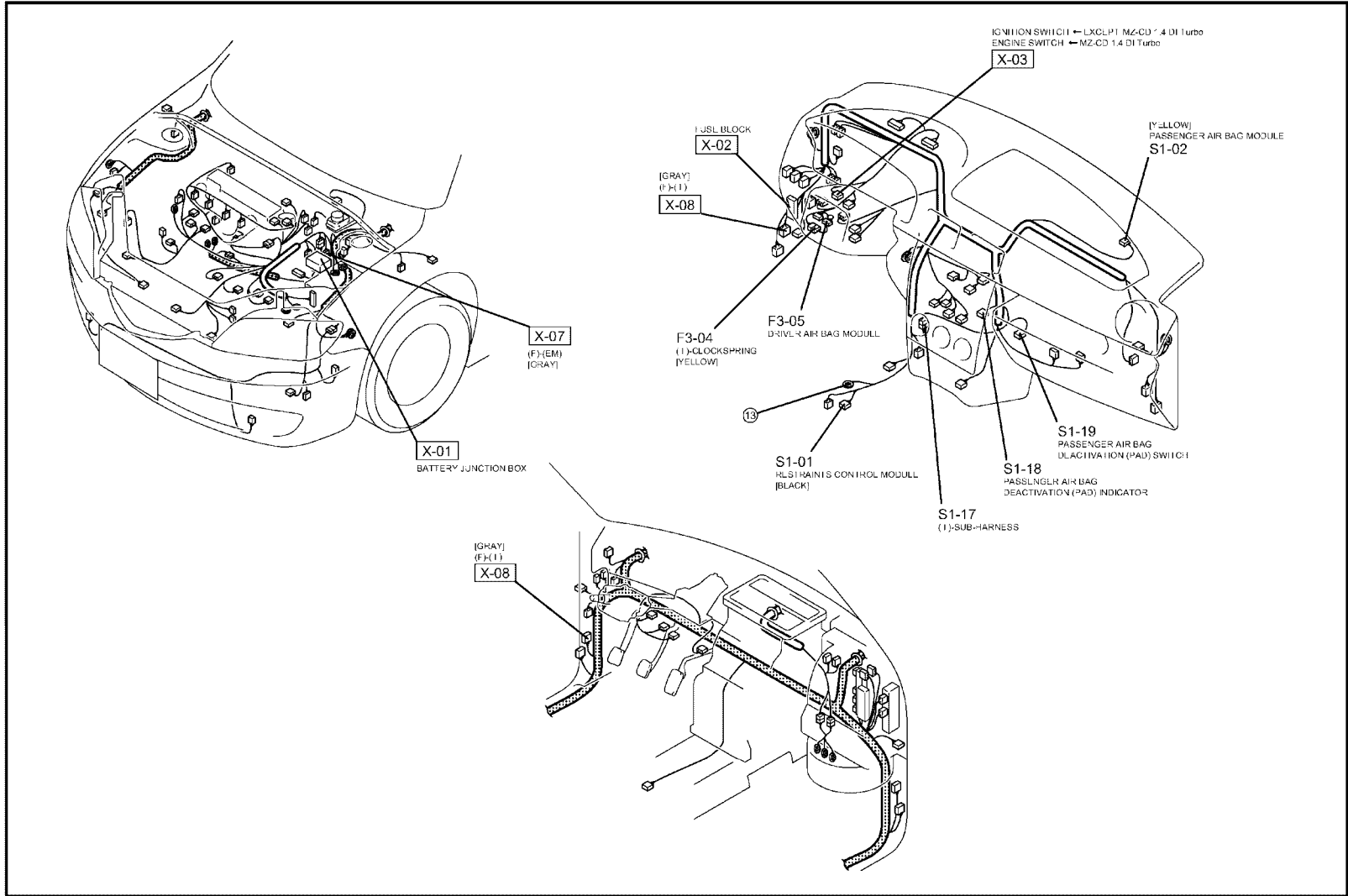
**K-3b**

# SUPPLEMENTAL RESTRAINT SYSTEM

S-1a



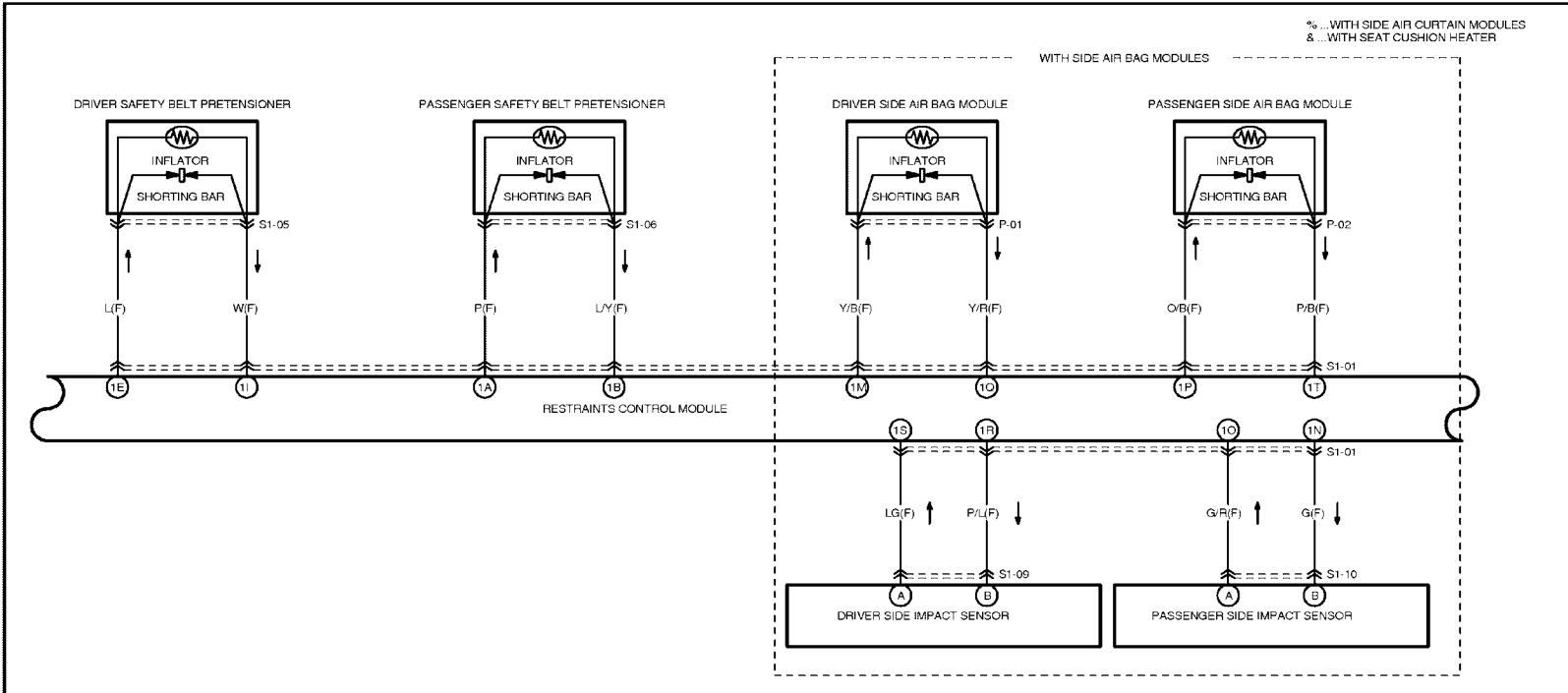
HARNESS SYMBOL:  (F)  (E)  (R)



S-1a

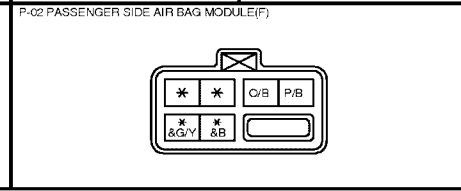
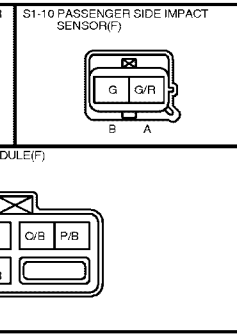
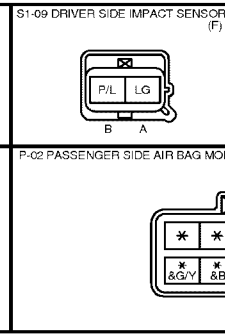
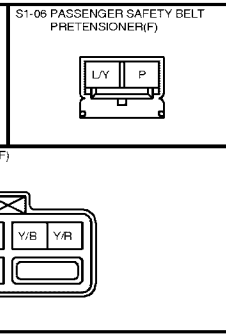
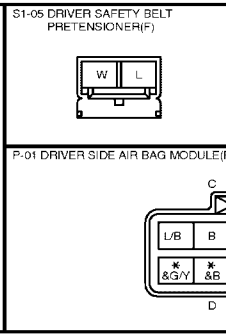
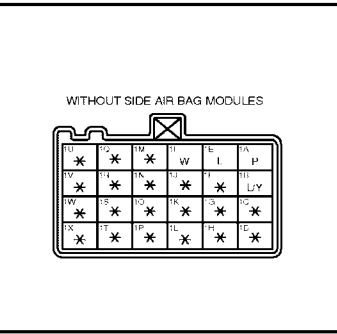
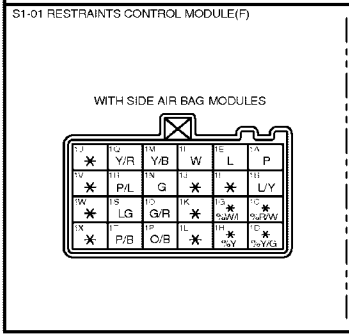
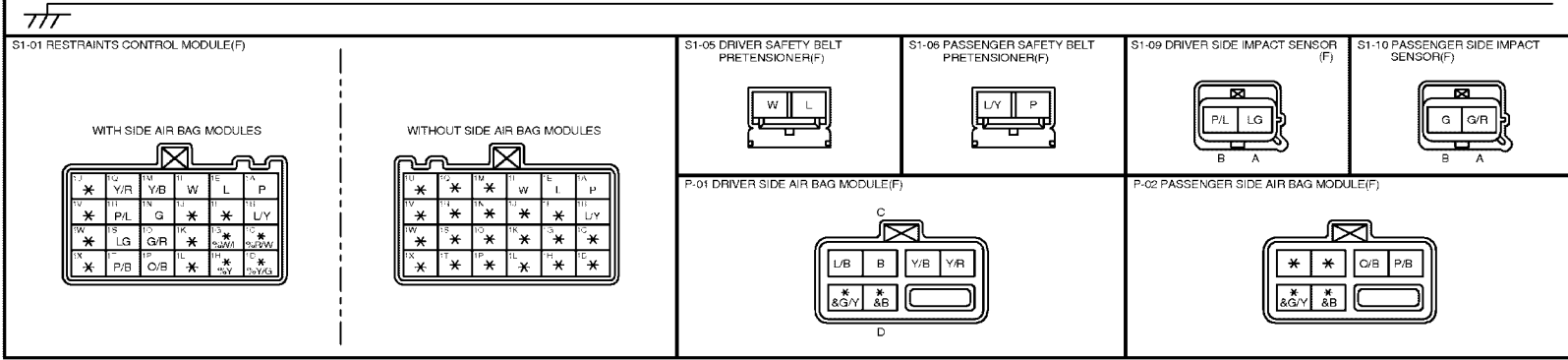
**SUPPLEMENTAL RESTRAINT SYSTEM**

**S-1b**

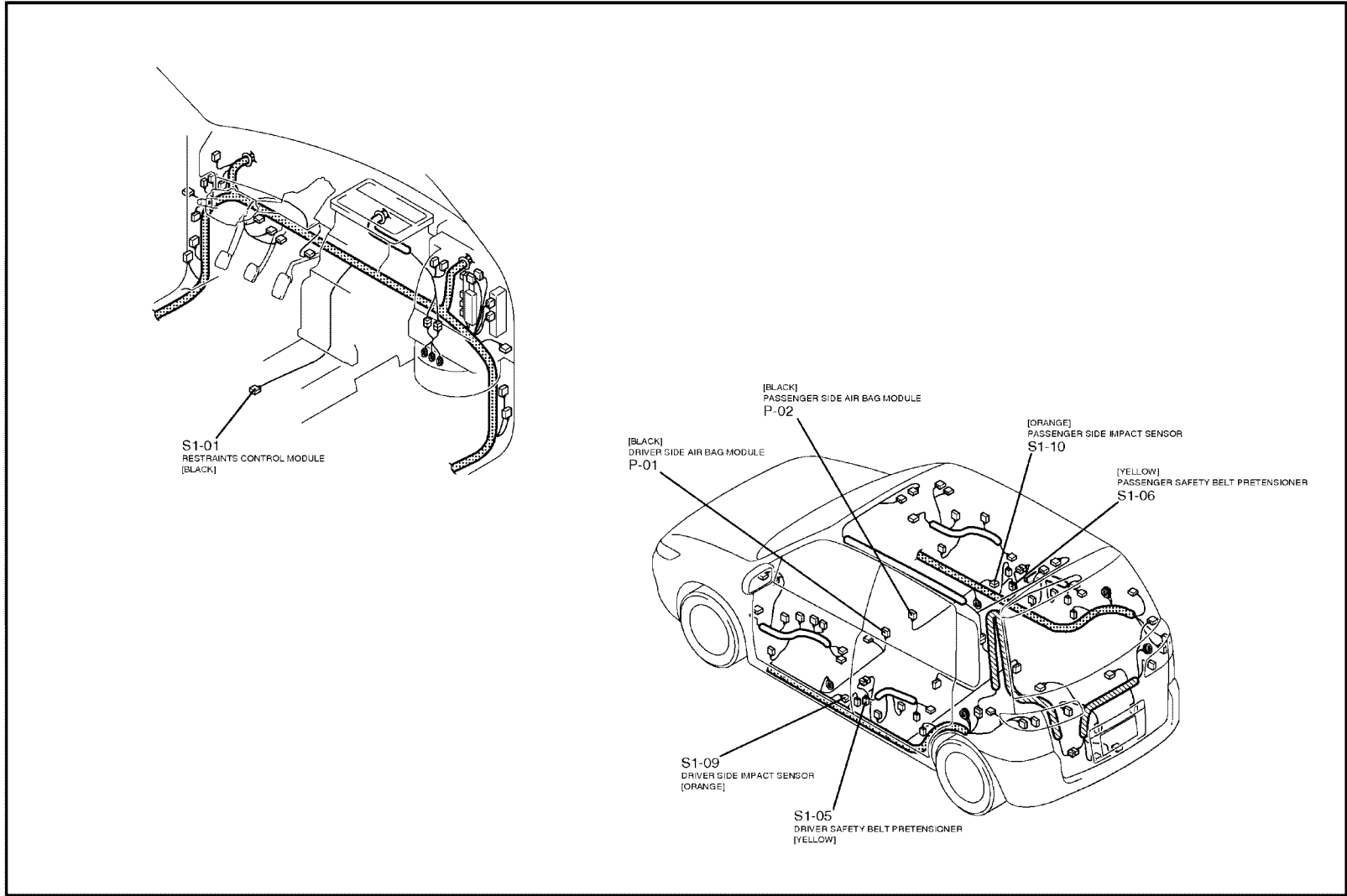


% ... WITH SIDE AIR CURTAIN MODULES  
& ... WITH SEAT CUSHION HEATER

24



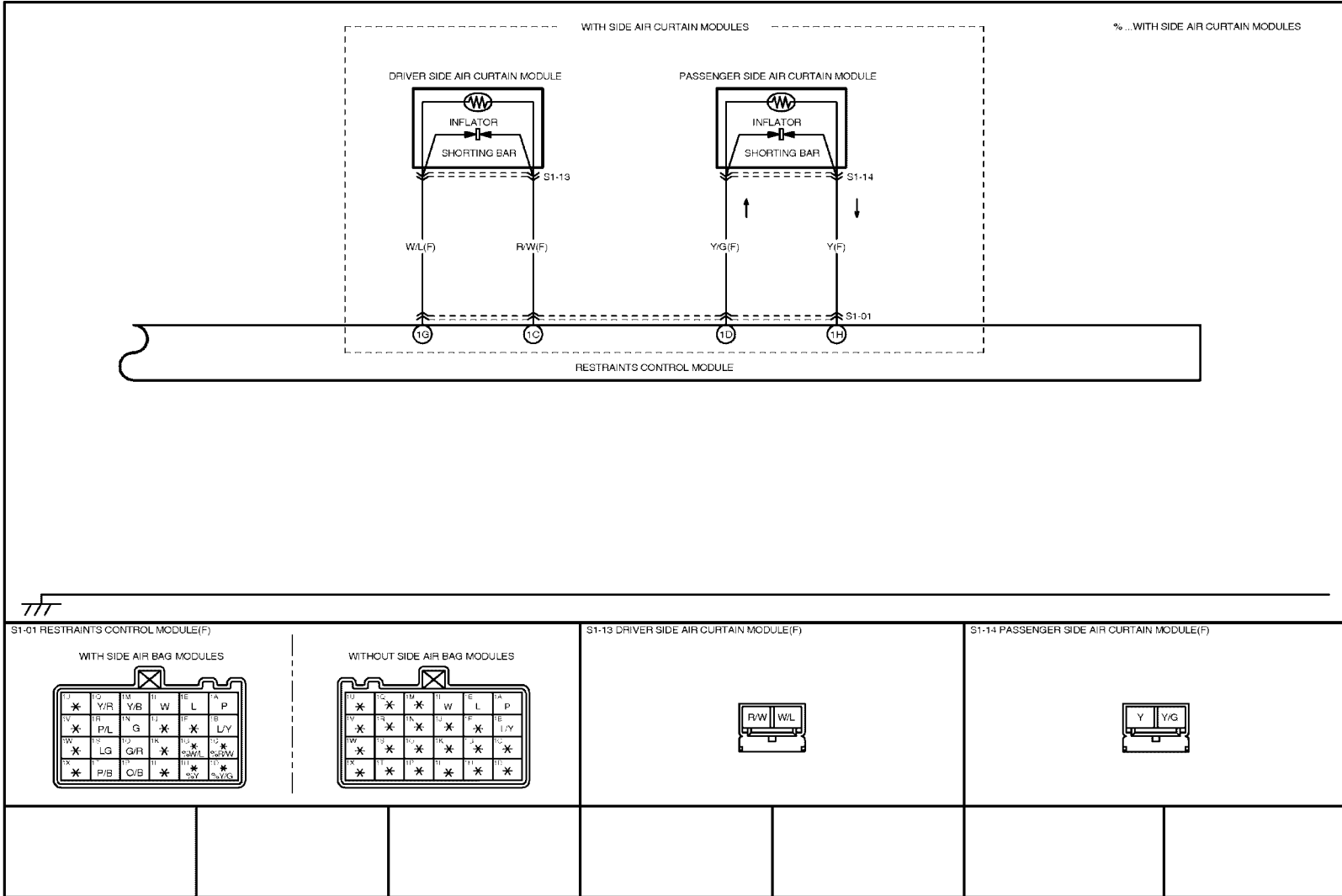
HARNES SYMBOL:  (F)  (E)  (R)



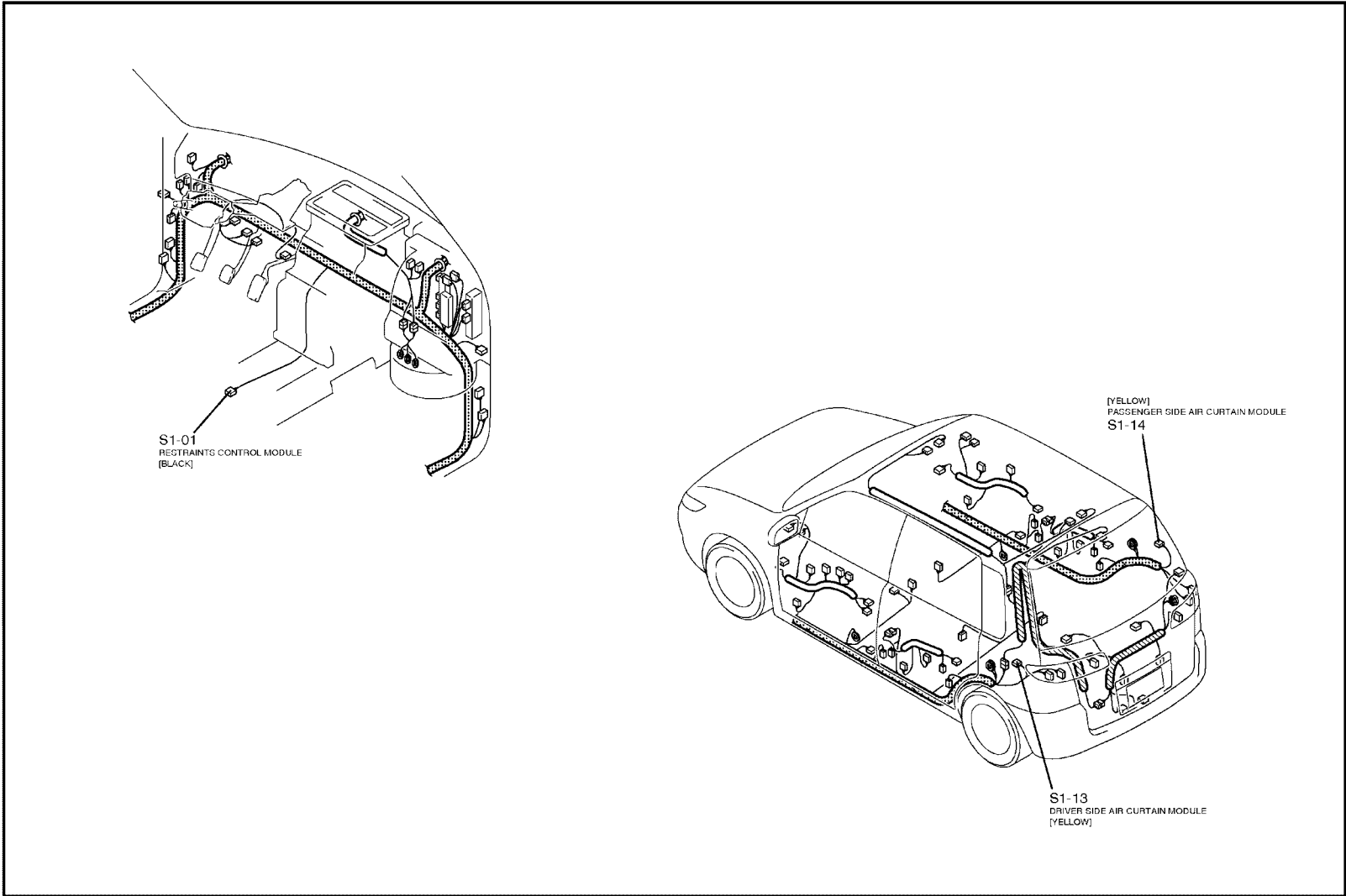
S-1b

**SUPPLEMENTAL RESTRAINT SYSTEM**

**S-1c**



HARNESS SYMBOL:  (F)  (E)  (R)



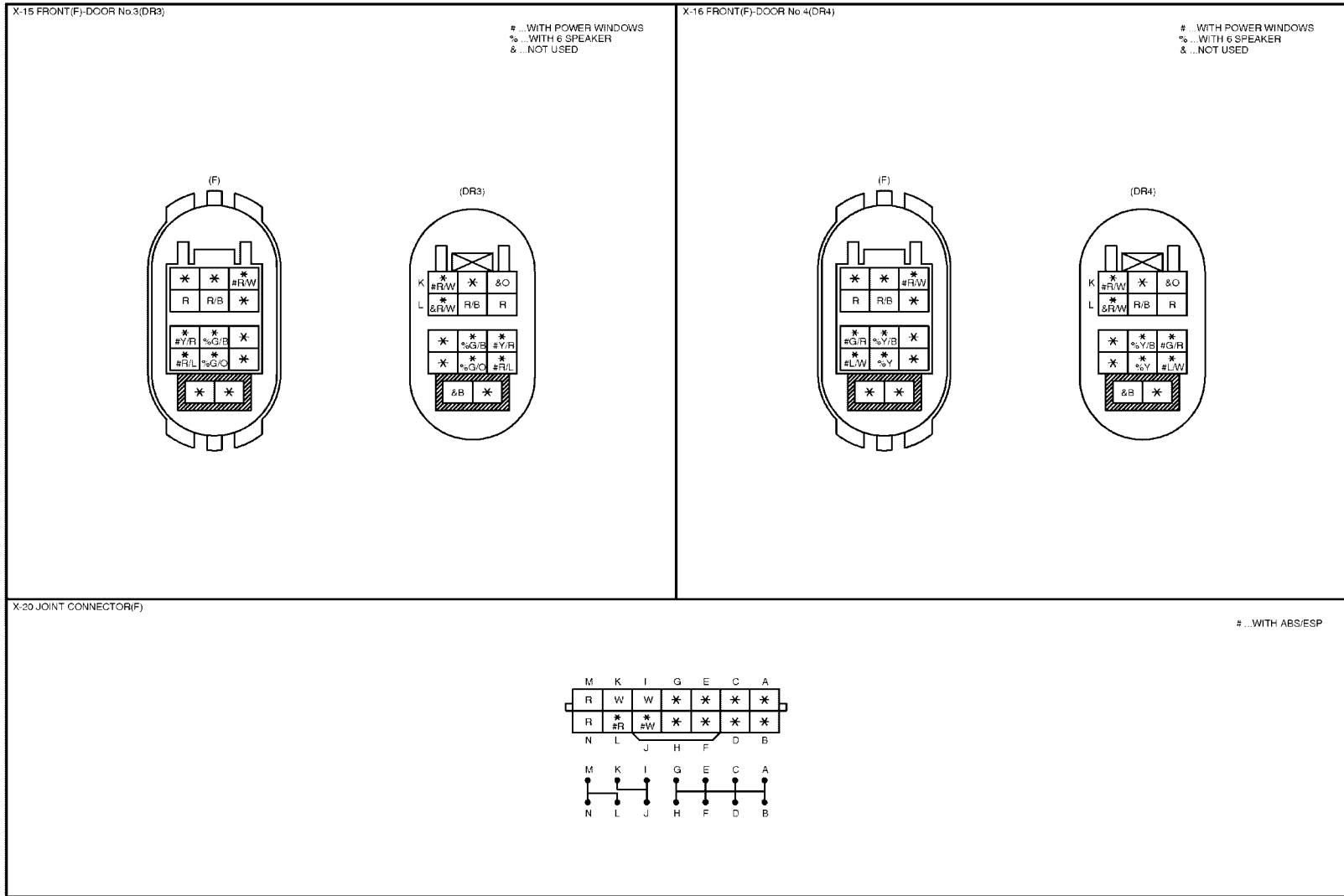
S-1c

COMMON CONNECTOR LIST

X-1

<p>X-09 FRONT(F)-INSTRUMENT PANEL(I)</p> <div style="display: flex; justify-content: space-around; align-items: center;"> <div style="text-align: center;"> <p>(F)</p> </div> <div style="text-align: center;"> <p>(I)</p> </div> </div> <div style="text-align: right; margin-top: 10px;"> <p># ... WITH ESP              ( ) ... AUTOMATED GEARSHIFT SYSTEM &amp; ... WITH ABS/ESP              @ ... WITH ABS/ESP              ⊕ ... WITH EXTERIOR MIRROR</p> </div>	
<p>X-13 FRONT(F)-DOOR No.1(DR1)</p> <div style="display: flex; justify-content: space-around; align-items: center;"> <div style="text-align: center;"> <p>(F)</p> </div> <div style="text-align: center;"> <p>(DR1)</p> </div> </div> <div style="text-align: right; margin-top: 10px;"> <p># ... WITH EXTERIOR MIRROR              @ ... WITH POWER WINDOWS              &amp; ... NOT USED</p> </div>	<p>X-14 FRONT(F)-DOOR No.2(DR2)</p> <div style="display: flex; justify-content: space-around; align-items: center;"> <div style="text-align: center;"> <p>(F)</p> </div> <div style="text-align: center;"> <p>(DR2)</p> </div> </div> <div style="text-align: right; margin-top: 10px;"> <p># ... WITH EXTERIOR MIRROR              @ ... WITH POWER WINDOWS              &amp; ... NOT USED</p> </div>

### COMMON CONNECTOR LIST



## ALPHABETICAL INDEX

<b>B</b>		<b>W</b>	
BRAKE FLUID LEVEL SWITCH .....	6	WIRING COLOR CODE .....	0
<b>C</b>			
CLOCK SPRING .....	22		
COMMON CONNECTOR LIST .....	28		
<b>D</b>			
DOOR AJAR SWITCH .....	12		
DOOR LOCK ACTUATOR .....	18		
DOOR LOCK BUTTON .....	18		
DOOR LOCKING MODULE .....	18		
DRIVER AIR BAG MODULE .....	22		
DRIVER SAFETY BELT PRETENSIONER .....	24		
DRIVER SIDE AIR BAG MODULE .....	24		
DRIVER SIDE AIR CURTAIN MODULE .....	26		
DRIVER SIDE IMPACT SENSOR .....	24		
<b>F</b>			
FRONT DOOR LOCK ACTUATOR .....	20		
<b>G</b>			
GENERAL INFORMATION .....	2		
<b>H</b>			
HEADLAMP .....	14		
HIGH BEAM RELAY .....	14		
<b>I</b>			
INSTRUMENT CLUSTER .....	4		
<b>K</b>			
KEY IN IGNITION WARNING SWITCH .....	18		
<b>L</b>			
LIFTGATE LATCH ACTUATOR .....	20		
LIGHT SWITCH .....	16		
LOW BEAM RELAY .....	14		
LUGGAGE COMPARTMENT LAMP SWITCH .....	12		
<b>O</b>			
OIL PRESSURE SWITCH .....	6		
<b>P</b>			
PARKING BRAKE SWITCH .....	10		
PASSENGER AIR BAG DEACTIVATION (PAD) INDICATOR .....	22		
PASSENGER AIR BAG DEACTIVATION (PAD) SWITCH .....	22		
PASSENGER AIR BAG MODULE .....	22		
PASSENGER SAFETY BELT PRETENSIONER ...	24		
PASSENGER SIDE AIR BAG MODULE .....	24		
PASSENGER SIDE AIR CURTAIN MODULE .....	26		
PASSENGER SIDE IMPACT SENSOR .....	24		
<b>R</b>			
REAR DOOR LOCK ACTUATOR .....	20		
RESTRAINTS CONTROL MODULE .....	22		
<b>S</b>			
SAFETY BELT BUCKLE SWITCH .....	6		
<b>V</b>			
VEHICLE IDENTIFICATION NUMBER .....	0		